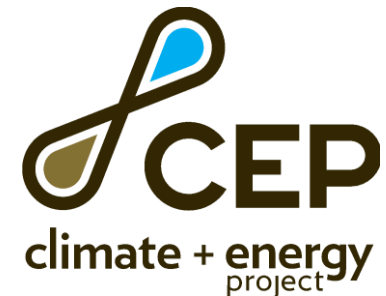




Climate Change, Public Health & Community Resilience: What You Can Do To Make a Difference



Dorothy Barnett
Rachel Myslivy
November 16, 2018
Kansas Rural Center Conference





The Climate & Energy Project seeks to dramatically reduce greenhouse gas emissions in America's Heartland through the ambitious deployment of energy efficiency and renewable energy, in policy and practice.



CEP's Proven Approach

- ✓ Connects people, organizations, and ideas
- ✓ Facilitates productive, long-term solutions
- ✓ Presents balanced facts
- ✓ Ensures that a wide range of voices are represented





Reducing climate risks positively impacts our state's **Water, Energy, Air, Land, Transportation, & Health.**



Partners explore connections between health equity and environmental concerns to collaboratively identify opportunities that **reduce risk and increase resilience in the face of a changing climate.**



CLEAN WEALTH Activities

Community

Highlight regional community resilience

Expand WEALTH partnership

Leadership

Foster leadership development

Facilitate WEALTH leadership network

Education

Compile resources on climate risks, solutions & policy priorities.

Engage in public outreach and education

Advocacy

Engage Kansans on effective civic engagement

Host Annual WEALTH Day at the Capitol

Normalization

Facilitate dialogs on effective climate communications

Circulate Declaration on Climate + Health in Kansas



Kansas WEALTH Policy, Civic Engagement, & YOU!

Tuesdays at 2PM

Kansas WEALTH = WATER – ENERGY – AIR – LAND – TRANSPORTATION – HEALTH



@CEPHeartland



SHARE YOUR VISION



If you woke up tomorrow, and Kansas was perfect... what would that look like?

Help us envision a healthy and resilient Kansas - rich with renewable energy generation, secure with sound energy efficiency policies, and strong with solutions for community resilience.

What's your vision of a resilient Kansas?



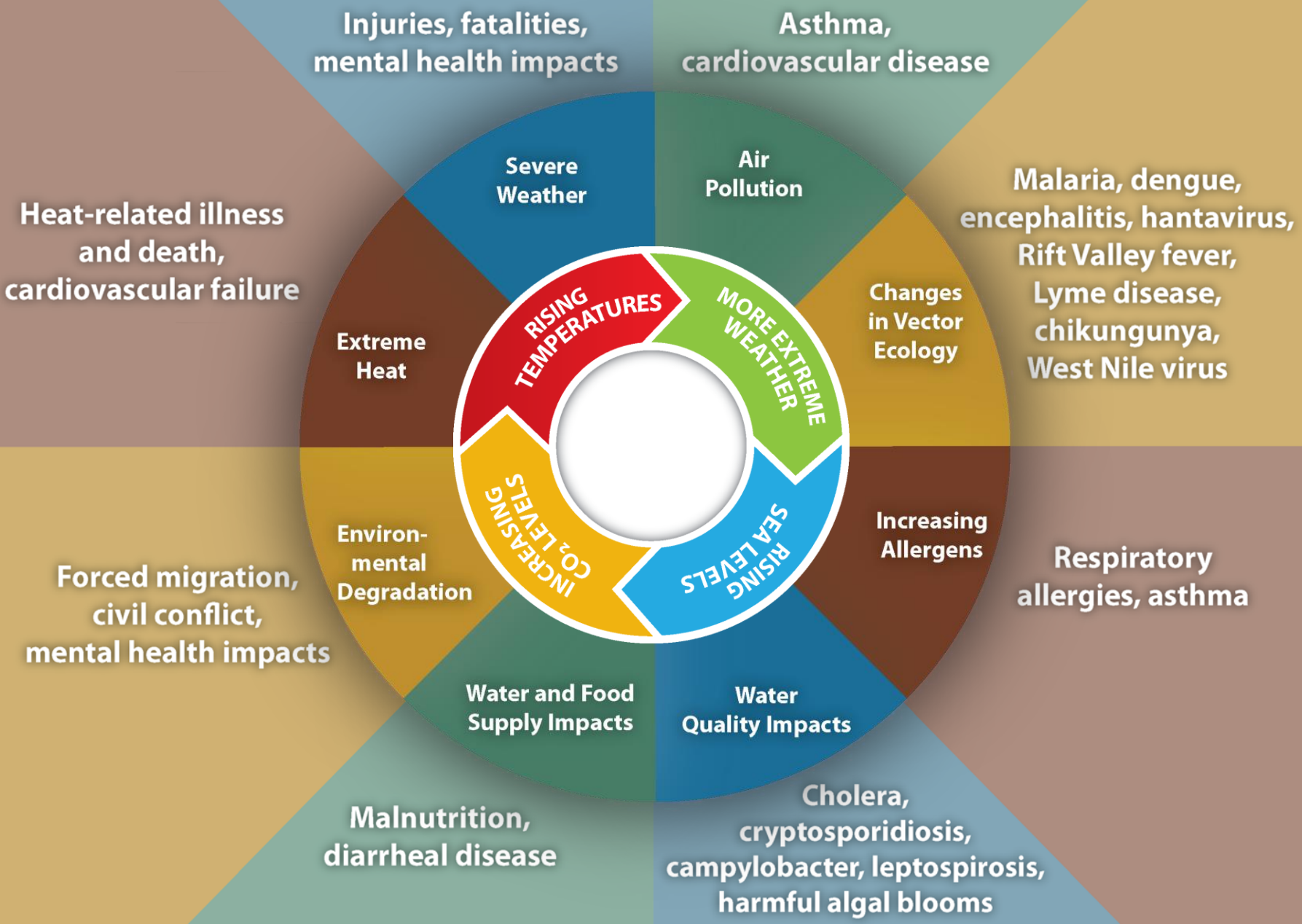
I want to live in a future where issues like climate change are taken seriously. I believe one of the best ways to make this future possible is by voting.

- Mackenzie

#RESILIENTKANSAS



Center for Disease Control – Impacts of Climate Change on Health



Who bears the greatest burden?



Climate Change and Our Lungs

Air pollution, extreme weather events and other challenges stemming from climate change all endanger our lung health.

- Air Pollution
- Allergens
- Flooding & Extreme Weather
- Wildfires

“From the direct impact of the temperature and weather changes to the special burdens these changes place on the most vulnerable communities, climate change seriously threatens our wellness—especially our lung health.”



American Academy of Pediatrics



DEDICATED TO THE HEALTH OF ALL CHILDREN™

“Tackling climate change could be the greatest global health opportunity of the 21st century.”

The effects of climate change on child health include:

- physical and psychological sequelae of weather disasters
- increased heat stress
- decreased air quality
- altered disease patterns of some climate sensitive infections
- food, water, and nutrient insecurity

“...failure to take prompt, substantive action would be an act of injustice to all children.”

Declaration on Climate Change and Health 2016



American College of Preventive Medicine
physicians dedicated to prevention



Asthma and Allergy
Foundation of America





AMERICAN PUBLIC HEALTH ASSOCIATION

For science. For action. For health.

Climate Change



#ClimateChangesHealth

January	Introduction to the Year of Climate Change and Health
February	Climate Justice and Health
March	Clean Energy
April	Transportation and Healthy Community Design
May	Air Quality, Lung and Heart Health
June	Mental Wellness and Resilience
July	Agriculture and Food Safety and Security
August	Water Quality
September	Extreme Weather
October	Vulnerable Populations, Focus on Children
November	Tribal and Indigenous Health
December	Co-benefits

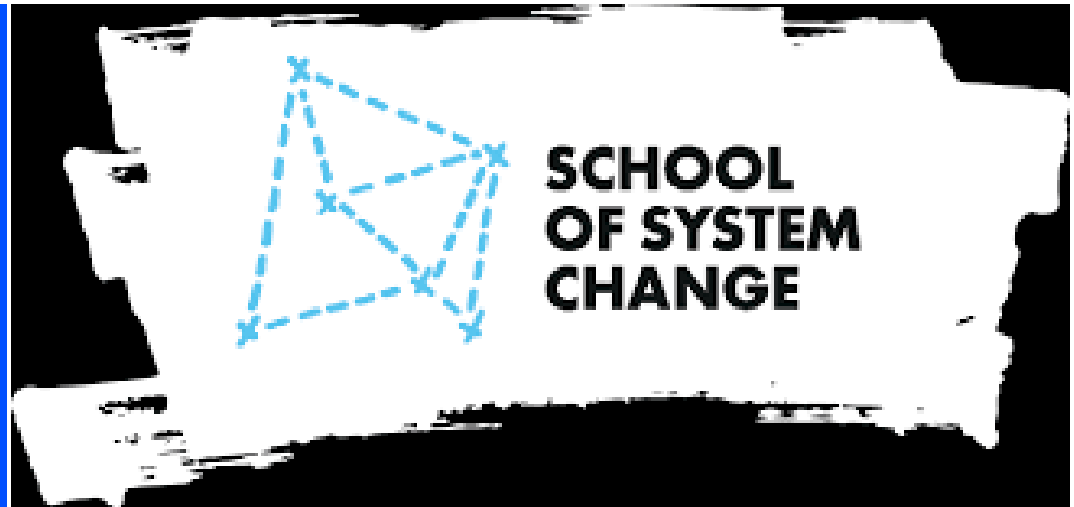
2019 Kansas Declaration on Climate and Health

- Data from the Kansas Health Institute
- Organizational, individual support
- Shared with legislature
- Gain support for climate resiliency planning
- Safeguard the future of our state
- Get the conversation started.



Process

- Forum for the Future School of Systems Change, Basecamp Americas
- Climate + Energy Project selected as Fieldwork Hosts



GARFIELD FOUNDATION

Fieldwork Team

Denise Abdul Rahman

Environmental & Climate Justice Chair,
Indiana NAACP (IN)

Jessica Ginger

Director of Implementation
Sustainability Consortium (AR)

Rachel Myslivy

Assistant Director
Climate + Energy Project (KS)

Elizabeth Rich

Coordinator
Forum for the Future (NY)

Jaimes Valdez

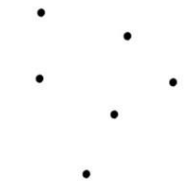
Policy Manager, Spark Northwest (OR)

Coach: Anna Birney

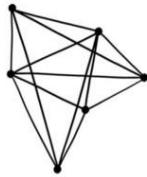
Director School of Systems Change,
Forum for the Future (UK)



TOOLS OF A SYSTEM THINKER



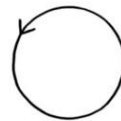
DISCONNECTION



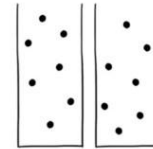
INTERCONNECTEDNESS



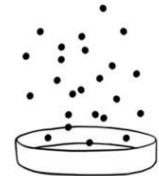
LINEAR



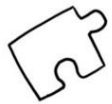
CIRCULAR



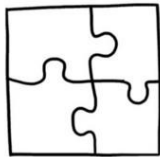
SILOS



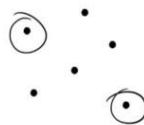
EMERGENCE



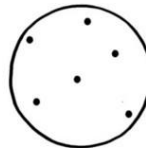
PARTS



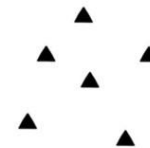
WHOLES



ANALYSIS



SYNTHESIS

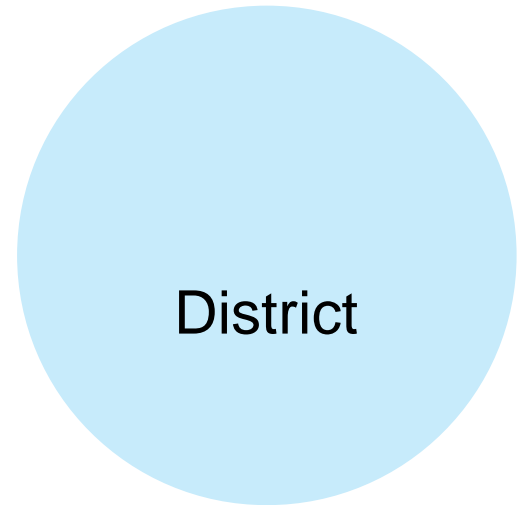
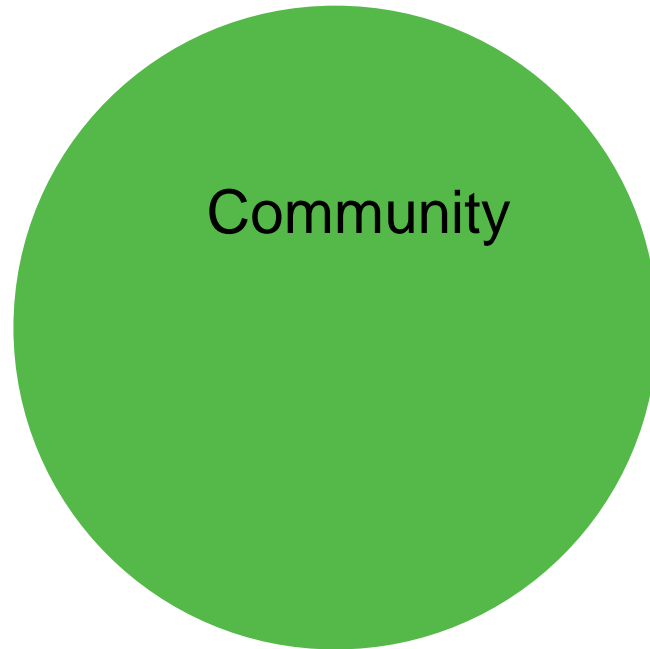
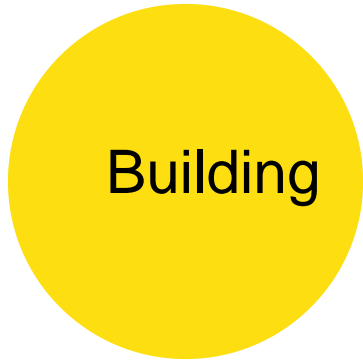


ISOLATION

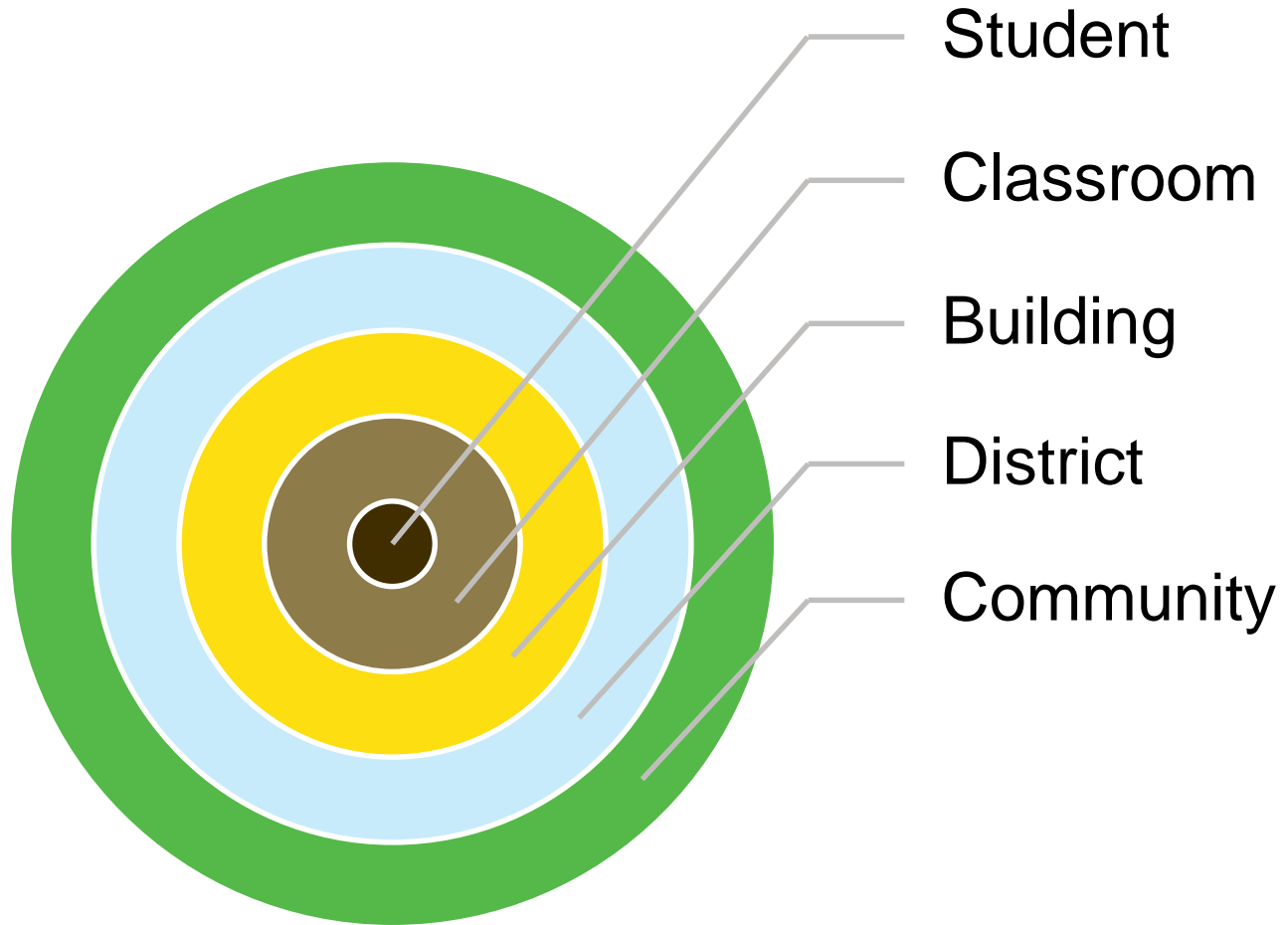


RELATIONSHIPS

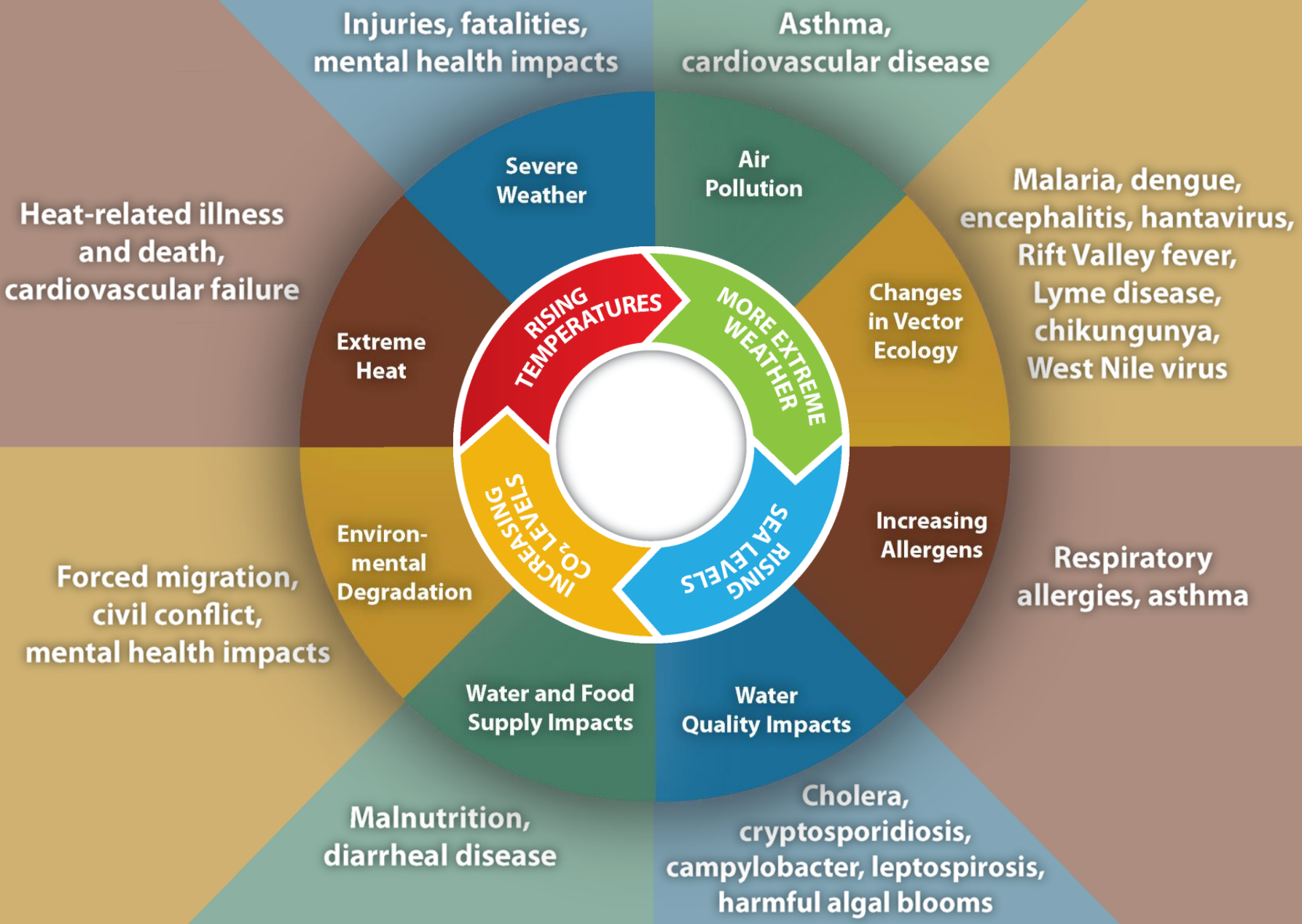
Systems



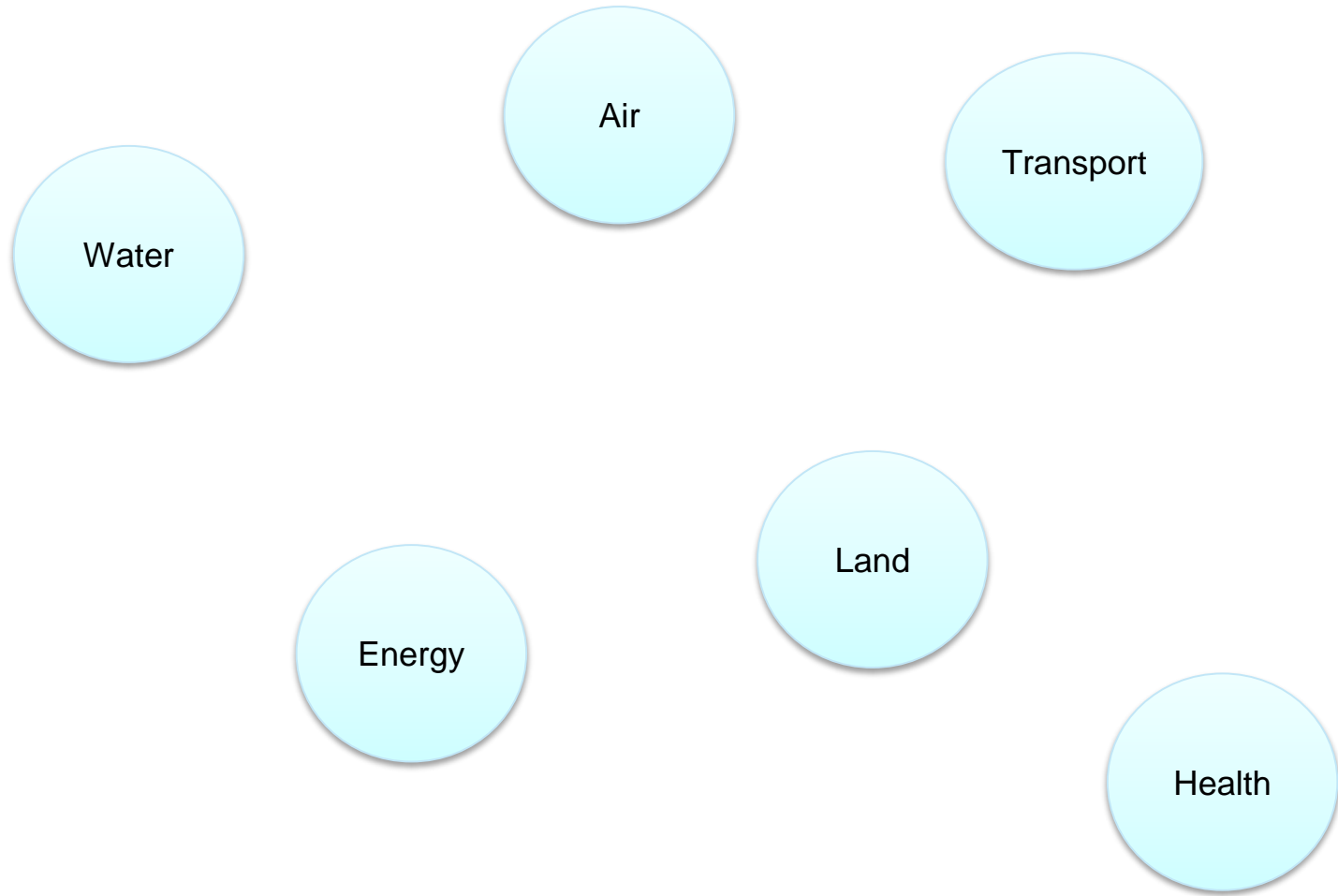
Nested Systems



Center for Disease Control – Impacts of Climate Change on Health



Systems to Address



Systems to Address

Goal

Environment

Health Equity

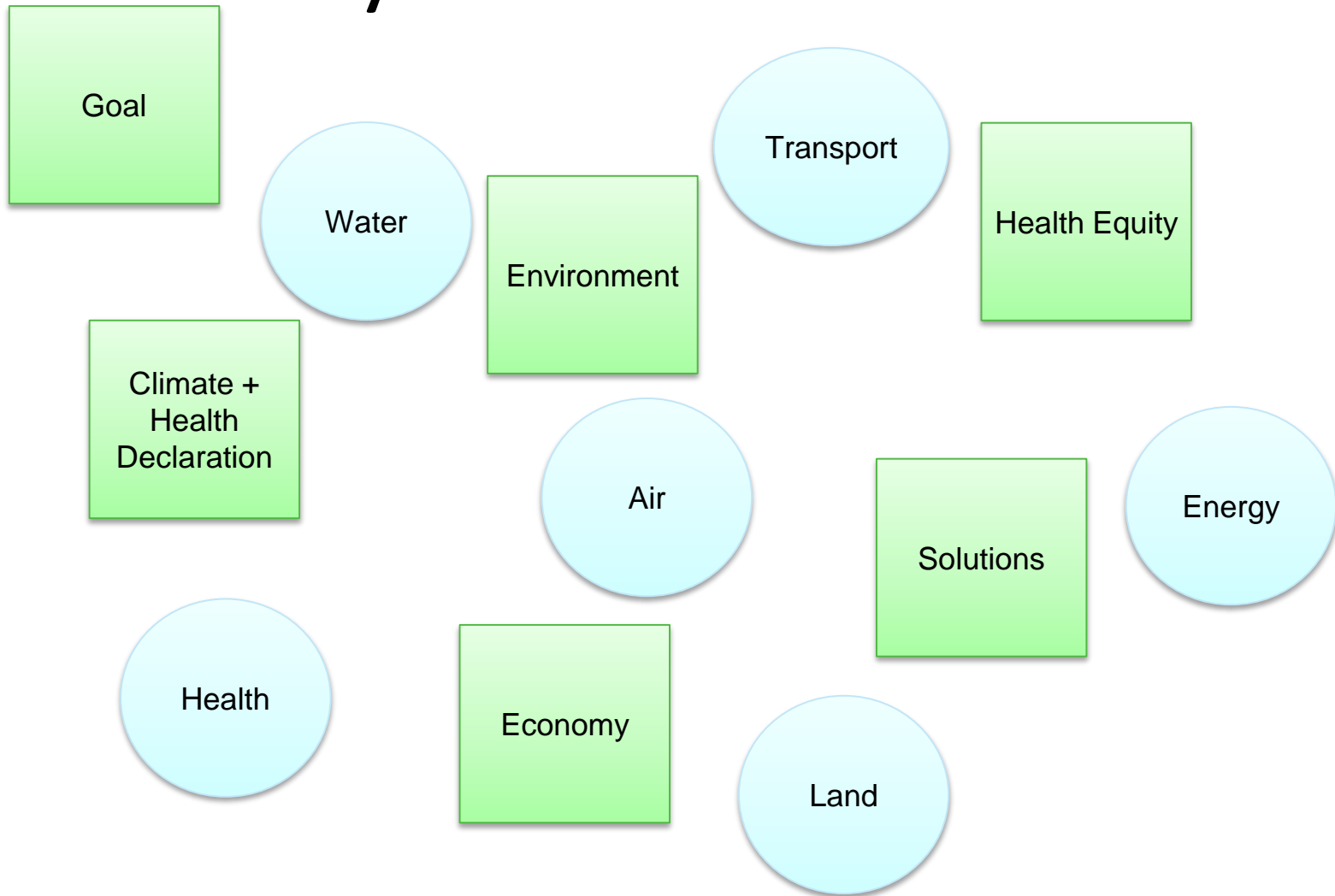
Climate +
Health
Declaration

Solutions

Economy



Systems to Address



KANSAS

systems to Address

Goal

Water

Environment

Transport

Health Equity

Climate +
Health
Declaration

Air

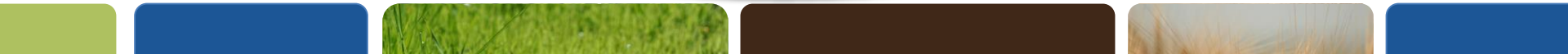
Solutions

Energy

Health

Economy

Land



KANSAS



Goal

Water

Transport

Health Equity

Environment

Climate +
Health
Declaration

Air

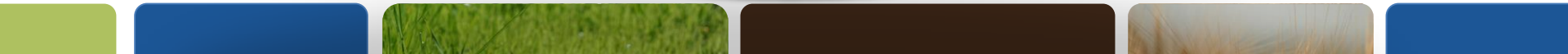
Solutions

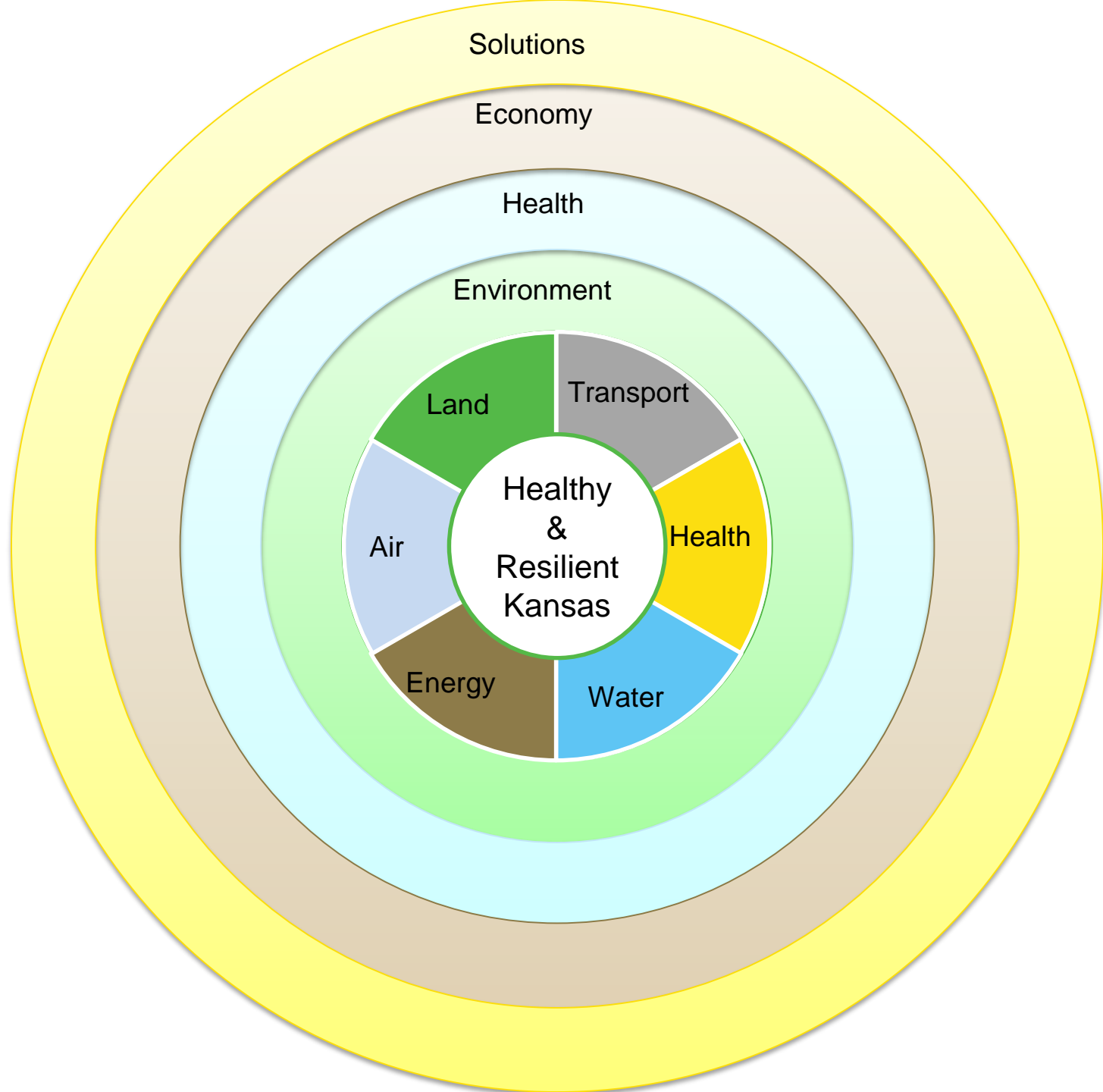
Energy

Health

Economy

Land





Solutions

Economy

Health

Environment

Land

Transport

Health

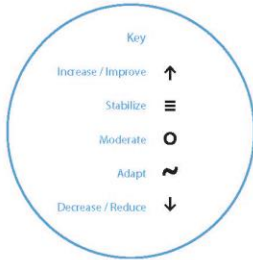
Healthy
&
Resilient
Kansas

Air

Energy

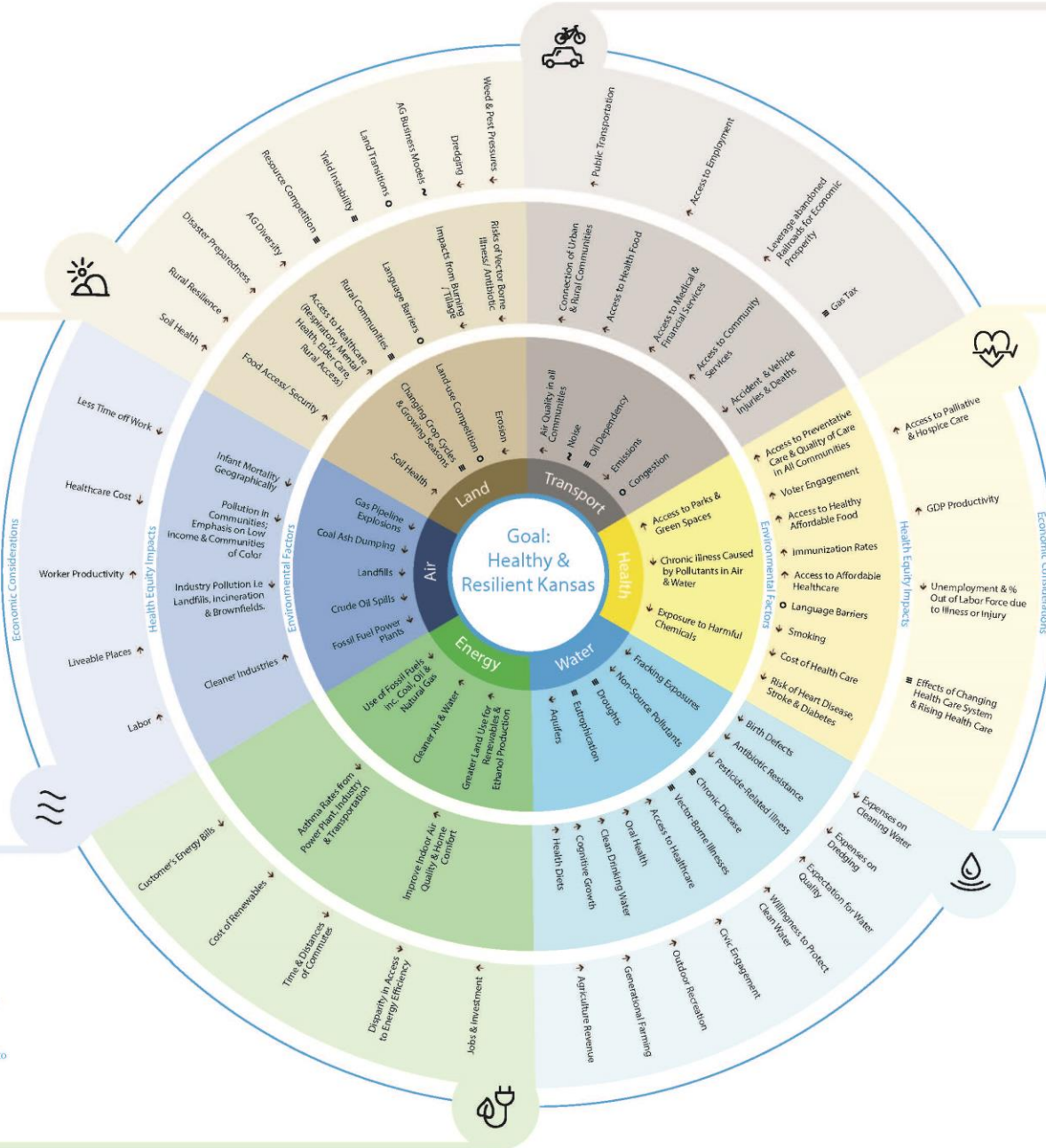
Water

- Sustainable Land-Use Planning
- Urban Agriculture
- Pollinator Protection
- Renewable Energy & Distributed Generation
- Local Food Systems
- Regional Planning, Local Implementation
- Long Range Planning & Zoning
- Ecologically-Sound Economic Development
- Economic Development Grasslands
- Diversify On-Farm Income Streams
- Regenerative, Sustainable Agriculture
- Siting Standards



- Create Air Assembly
- Health Partners
- Champions
- LD Health Equity
- Engagement
- Better Quality Standards & Monitoring
- Reduce Solid Waste
- Recycle

- Develop Blogs/ Methane Capture & Direct Use for Transport & Energy
- Electrify Agriculture Equipment & Fuel with Renewable Sources
- Invest in Transit & Accessible Infrastructure
- Allow Community Solar Projects to Deliver Bill Savings to Customers
- Improve Building Code Standards
- Develop State Utility Incentives for Energy Efficiency & Renewables with Economic Development Goals

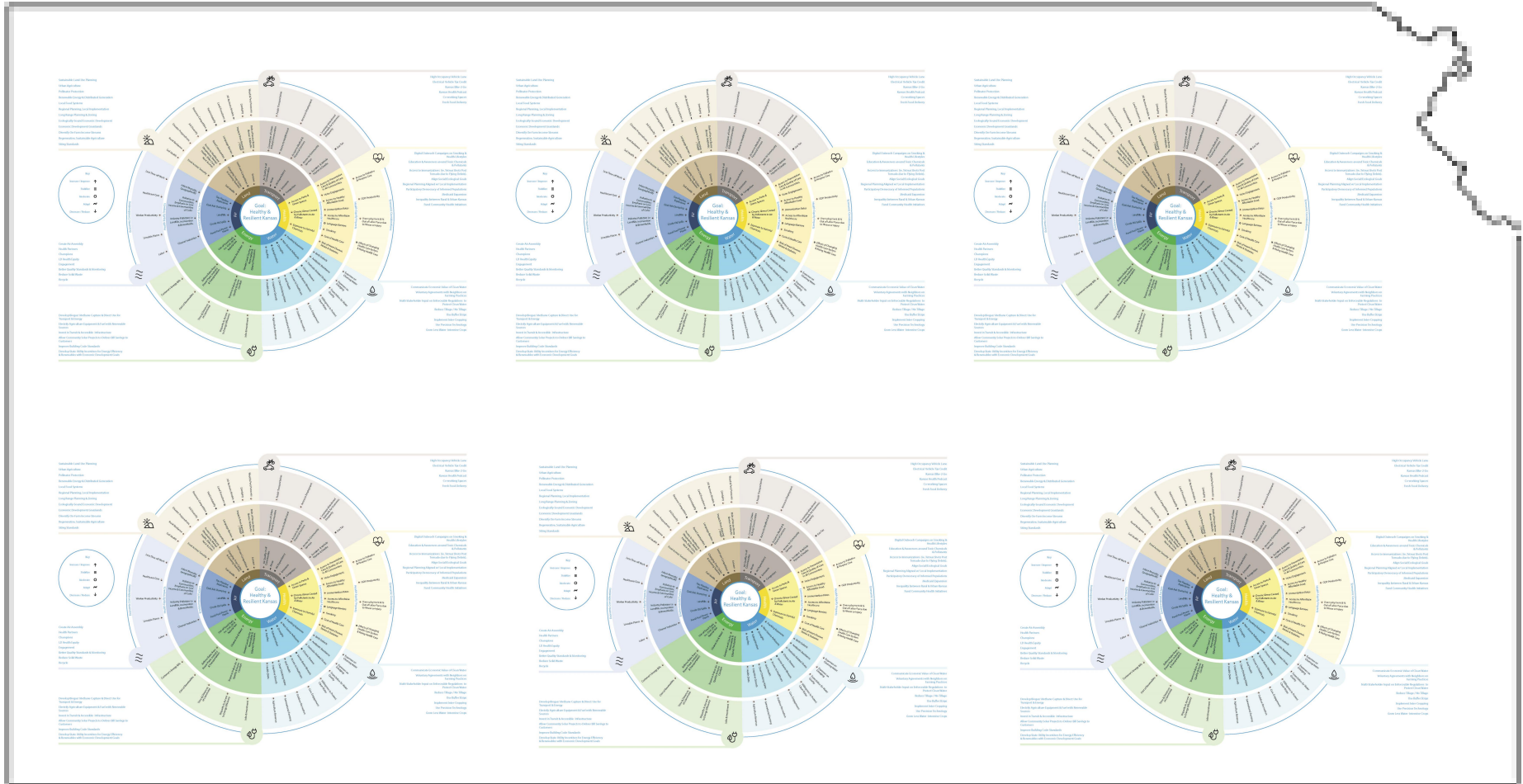


- High Occupancy Vehicle Lane
- Electrical Vehicle Tax Credit
- Kansas Bike-2-Go
- Kansas Health Podcast
- Co-working Spaces
- Fresh Food Delivery

- Digital Outreach Campaigns on Smoking & Health Lifestyles
- Education & Awareness around Toxic Chemicals & Pollutants
- Access to Immunizations (ie. Tetanus Shots Post Tornado due to Flying Debris).
- Align Social/Ecological Goals
- Regional Planning Aligned w/ Local Implementation
- Participatory Democracy of Informed Populations
- Medicaid Expansion
- Inequality between Rural & Urban Kansas
- Fund Community Health Initiatives

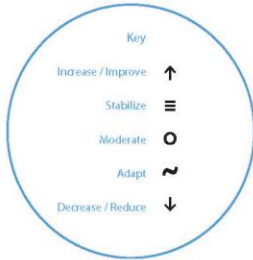
- Communicate Economic Value of Clean Water
- Voluntary Agreements with Neighbors on Farming Practices
- Multi-Stakeholder Input on Enforceable Regulations to Protect Clean Water
- Reduce Tillage / No Tillage
- Use Buffer Strips
- Implement Inter-Cropping
- Use Precision Technology
- Grow Less Water - Intensive Crops

Community Resilience: what's it look like where you're from?



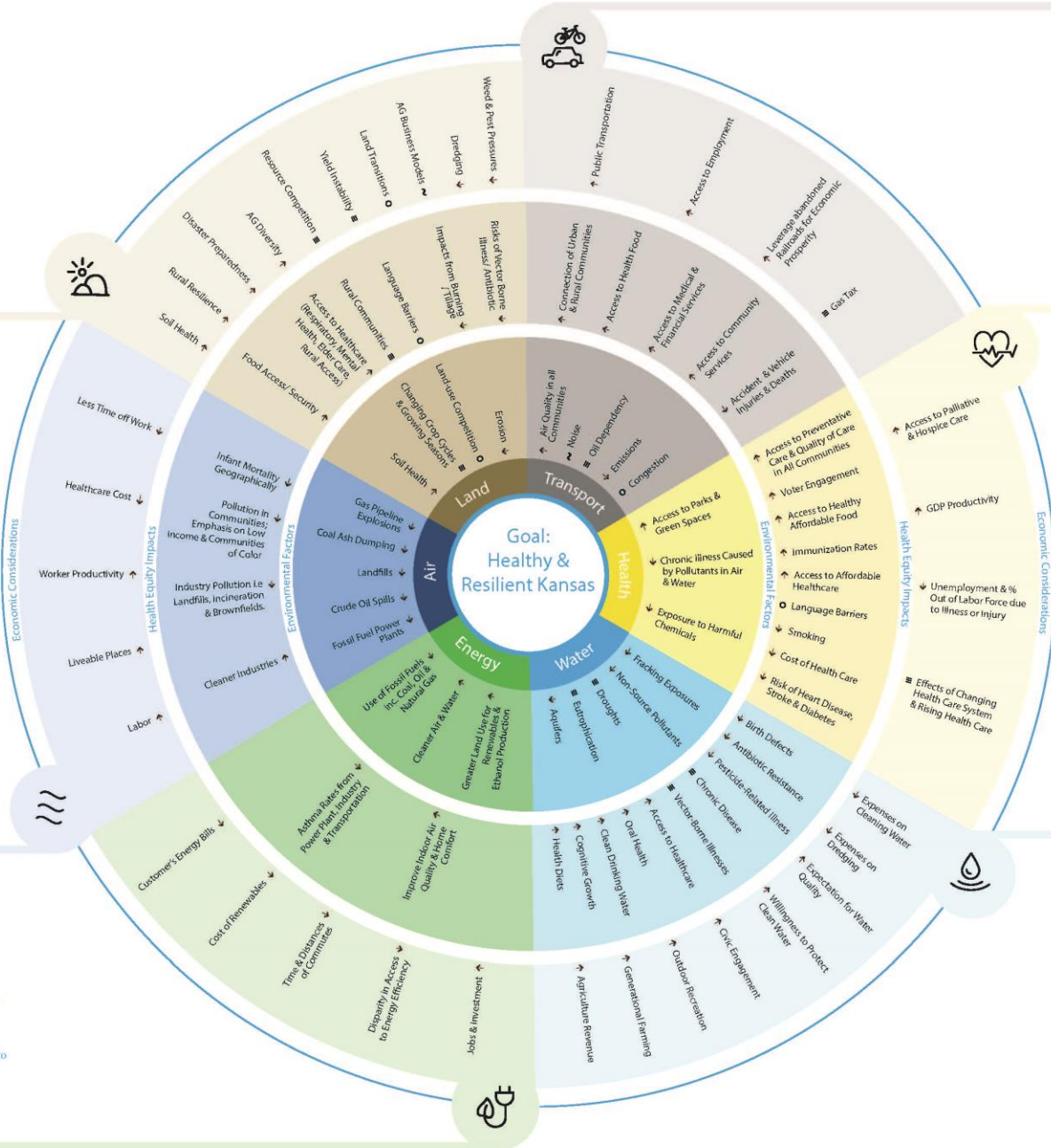
- Sustainable Land-Use Planning
- Urban Agriculture
- Pollinator Protection
- Renewable Energy & Distributed Generation
- Local Food Systems
- Regional Planning, Local Implementation
- Long Range Planning & Zoning
- Ecologically-Sound Economic Development
- Economic Development Grasslands
- Diversify On-Farm Income Streams
- Regenerative, Sustainable Agriculture
- Siting Standards

- High Occupancy Vehicle Lane
- Electrical Vehicle Tax Credit
- Kansas Bike-2-Go
- Kansas Health Podcast
- Co-working Spaces
- Fresh Food Delivery



- Create Air Assembly
- Health Partners
- Champions
- LD Health Equity
- Engagement
- Better Quality Standards & Monitoring
- Reduce Solid Waste
- Recycle

- Develop Blogs/ Methane Capture & Direct Use for Transport & Energy
- Electrify Agriculture Equipment & Fuel with Renewable Sources
- Invest in Transit & Accessible Infrastructure
- Allow Community Solar Projects to Deliver Bill Savings to Customers
- Improve Building Code Standards
- Develop State Utility Incentives for Energy Efficiency & Renewables with Economic Development Goals



- Digital Outreach Campaigns on Smoking & Health Lifestyles
- Education & Awareness around Toxic Chemicals & Pollutants
- Access to Immunizations (ie. Tetanus Shots Post Tornado due to Flying Debris).
- Align Social/Ecological Goals
- Regional Planning Aligned w/ Local Implementation
- Participatory Democracy of Informed Populations
- Medicaid Expansion
- Inequality between Rural & Urban Kansas
- Fund Community Health Initiatives

- Communicate Economic Value of Clean Water
- Voluntary Agreements with Neighbors on Farming Practices
- Multi-Stakeholder Input on Enforceable Regulations to Protect Clean Water
- Reduce Tillage / No Tillage
- Use Buffer Strips
- Implement Inter-Cropping
- Use Precision Technology
- Grow Less Water - Intensive Crops

CLEAN WEALTH Activities

Community

Highlight regional community resilience

Expand WEALTH partnership

Leadership

Foster leadership development

Facilitate WEALTH leadership network

Education

Compile resources on climate risks, solutions & policy priorities.

Engage in public outreach and education

Advocacy

Engage Kansans on effective civic engagement

Host Annual WEALTH Day at the Capitol

Normalization

Facilitate dialogs on effective climate communications

Circulate Declaration on Climate + Health in Kansas



Kansas
Environmental
Leadership



WATER ENERGY AIR LAND TRANSPORTATION HEALTH



CLIMATE + ENERGY
VOTERS TAKE
ACTION



WATER – ENERGY – AIR – LAND – TRANSPORT - HEALTH

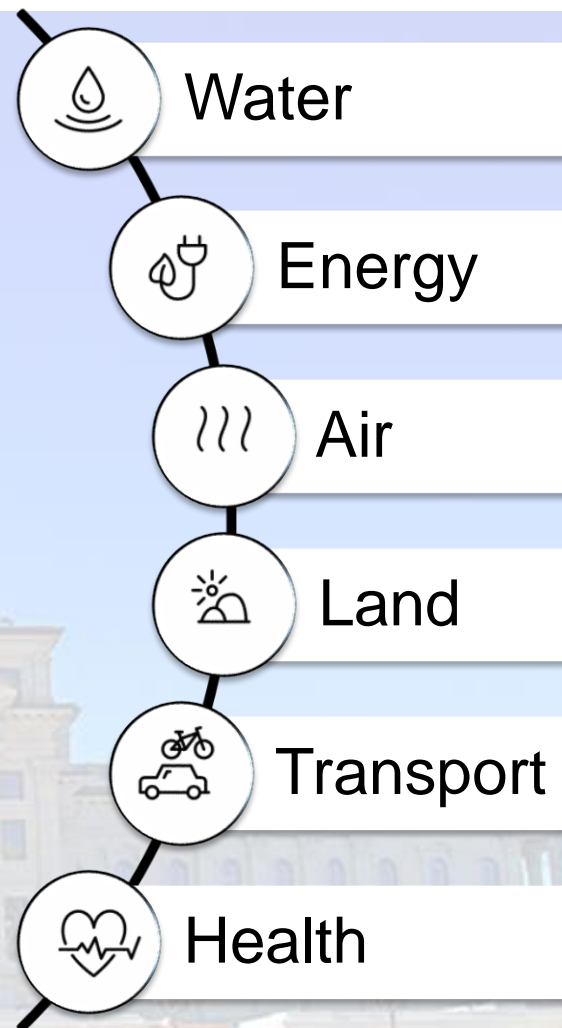


KANSAS WEALTH

DAY OF ADVOCACY & EDUCATION

MARCH 12, 2019

- ✓ Policy Briefing
- ✓ WEALTH Dialogs
- ✓ Lunch with Legislators
- ✓ Solutions Showcase
- ✓ Visits with Legislators





It's about Kansas.
AND the work we do
FOR the environment
FOR a better world.
**AND HOW WE SHOW UP
TO DO THE WORK.**



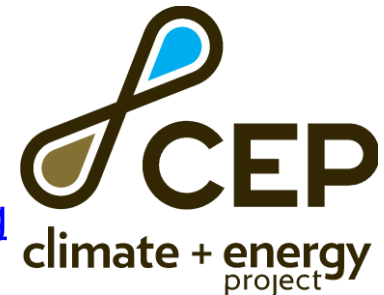


*Increasing community resilience
and reducing climate risks
in the Heartland.*



Dorothy Barnett
Executive Director
Climate + Energy Project
barnett@climateandenergy.org

Rachel Myslivy
Assistant Director
Climate + Energy Project
myslivy@climateandenergy.org



CEPHeartland