

Jenna Spencer

The Art Scene in Pittsburg, KS

Pittsburg Memorial Auditorium

Built in 1925 Renovated in 1984

Operates on City Sales Tax



Pittsburg Community Theatre

Est. 1976





- Canvassed Pittsburg to get the tax approved to run the Memorial Auditorium
- Runs on a board of volunteers
- Operates on donors, tickets sales, and free rental at the Auditorium
- 3-4 shows every year
- Hosts a summer camp for kids – 2 sessions – 80 kids



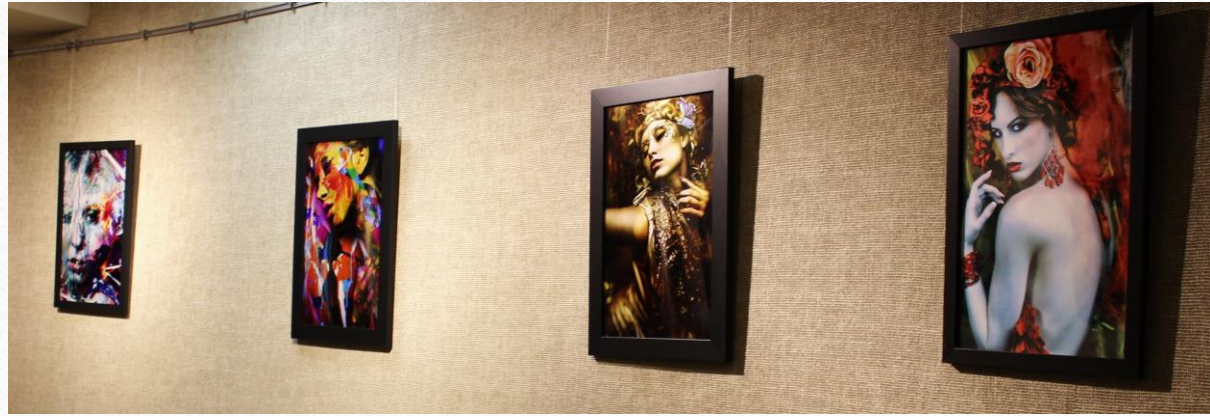
Midwest Regional Ballet

- Local Ballet Troupe / School that performs shows instead of recitals
- Directed By Kaye Lewis
- Located in Joplin, MO
- Performs at the Memorial Auditorium
- 2-3 Shows a year



Beverly Corcoran Gallery

- Partnership with local schools:
- Elementary, Middle School, High School, University
- Local Art Galleries
- Local Artists





Pittsburg Art Walk

Est. 2008

-
- Started by local downtown business owners
 - Runs on a board of volunteers
 - Every vendor has to display art or have an interactive art project
(this rule excludes food trucks and musicians)
 - Boosts downtown economy
 - Gives artists another outlet to sell work
 - Great creative outlet
 - Great for networking



PITTSBURGARTWALK'18





Art Forms Gallery

Ext. 2016

- Coop Business
- Artists pay \$50 for rent each month
- Artists work 5-10 hours a month
- Artist keep 100% of their sales
- Classroom space in back
- 16-20 Artists



Paint the Town Red

Est. 2005

- Local Businesses partner with Local Artists
- Kids Events
- Balloon Launch
- Support of local schools
- Contest w/ a circulating trophy



SEK Art Fest

Est. 2013

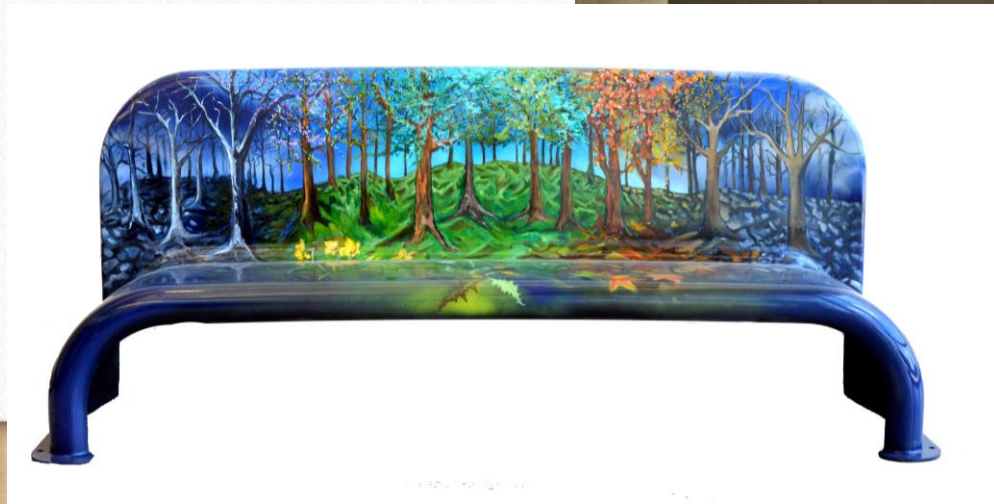
- Runs on a Board of Volunteers
- Underwriters fund objects and artist pay
- Community display of art
- Auction funds grants for other community art projects











MURALS











Thank You

Support the Arts
It Brings Communities Together