

Climate, Health, & Resilience: Connections and Conversations

Kansas Rural Center Conference

November 18, 2017

Dorothy Barnett, Rachel Myslivy

www.climateandenergy.org





The Climate & Energy Project seeks to dramatically reduce greenhouse gas emissions in America's Heartland through the ambitious deployment of energy efficiency and renewable energy, in policy and practice.

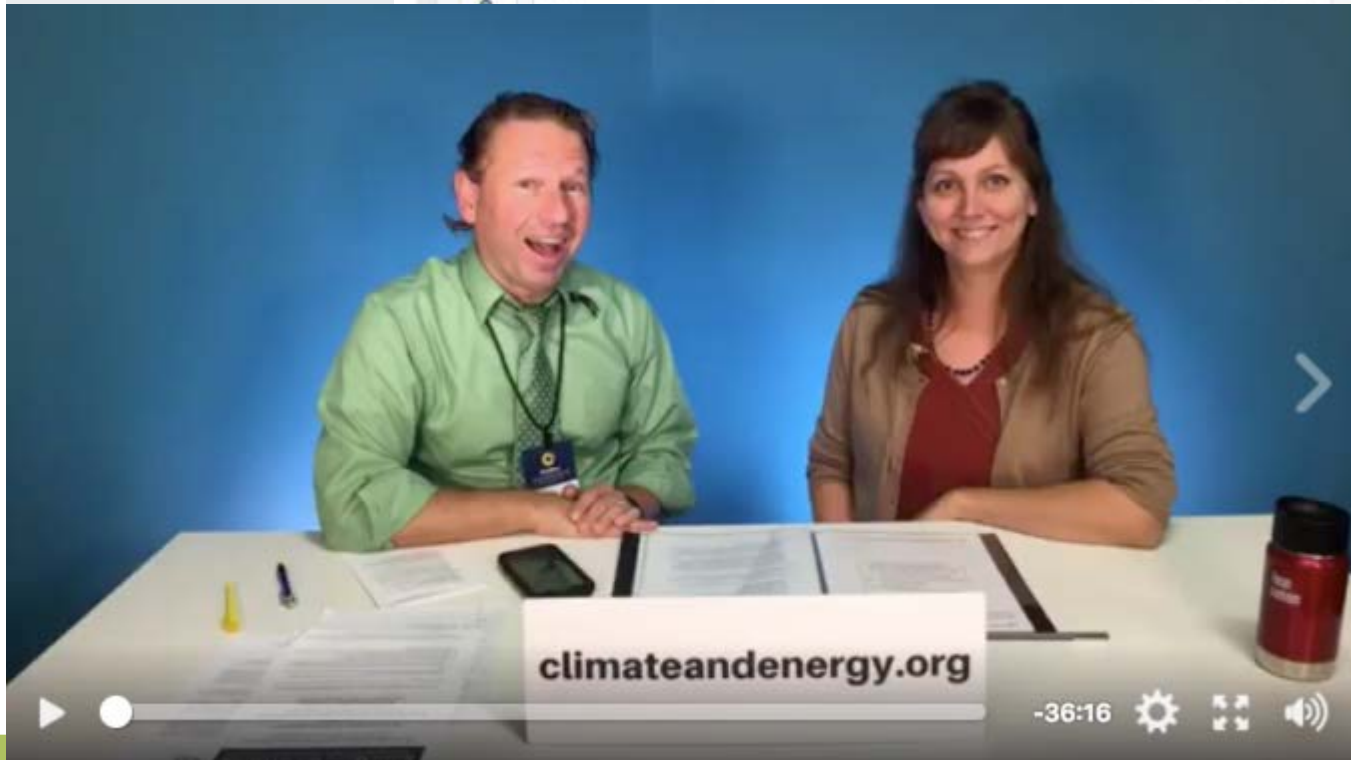
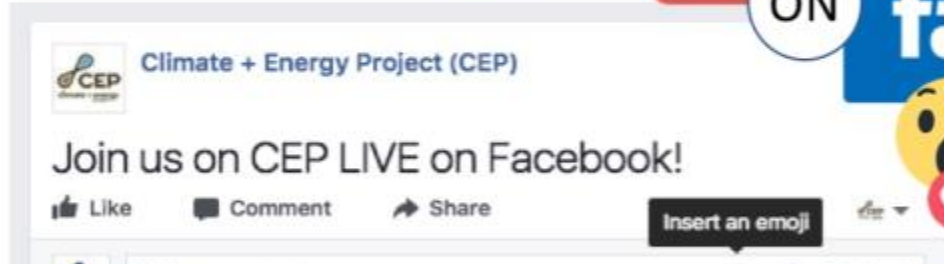


The CEP Approach

climate + energy
project

- ✓ Connects people, organizations, and ideas
- ✓ Facilitates productive, long-term solutions
- ✓ Presents balanced facts
- ✓ Ensures that a wide range of voices are represented



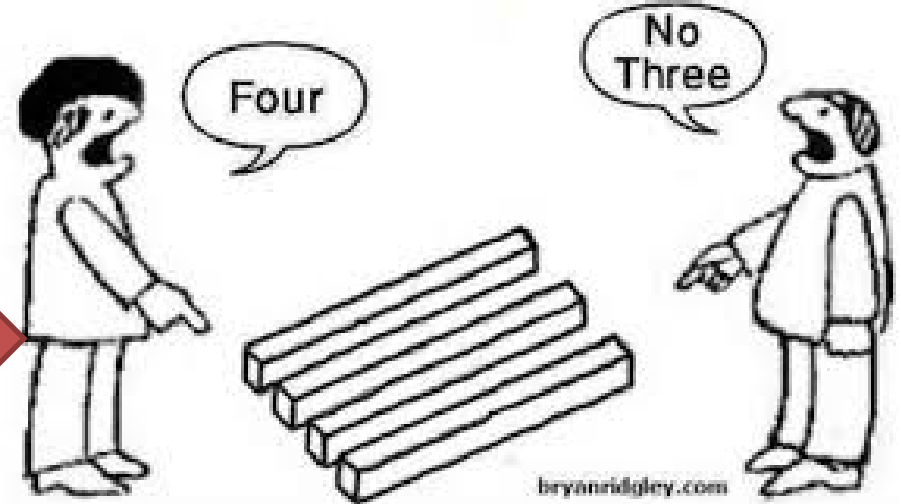


Presentation - Conversation

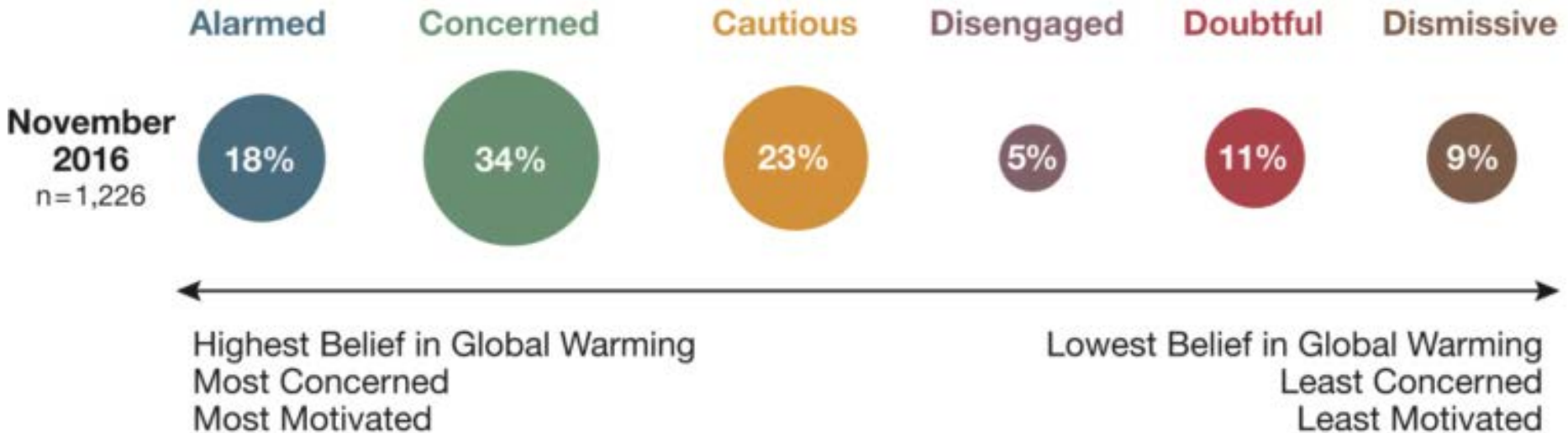


What this is...

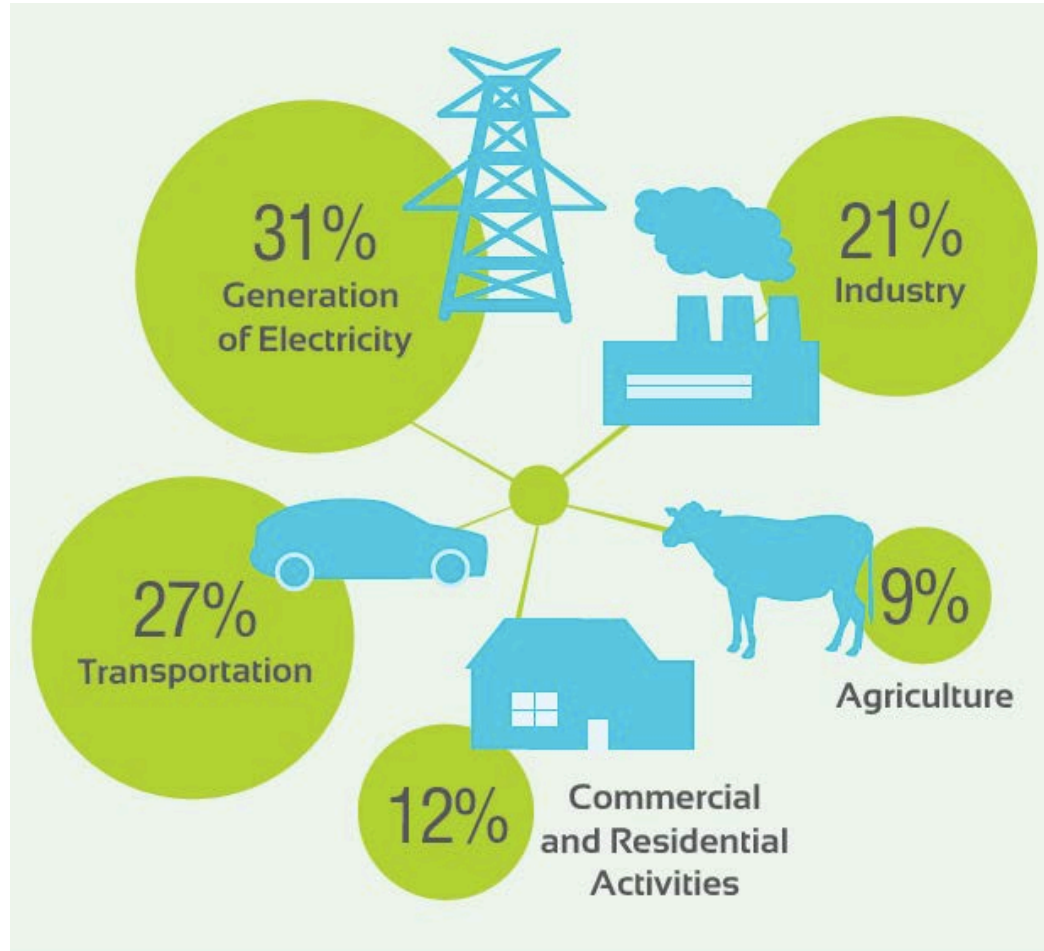
And what it is not.



6 Americas



Greenhouse Gas Emissions



climate choices

how should we meet the challenges of a warming planet?



National Climate Assessment

- human health
- Water
- Energy
- Transportation
- Agriculture
- Forests
- ecosystems
- interactions among sectors at the national level.



U.S. regions: Northeast, Southeast and Caribbean, Midwest, Great Plains, Southwest, Northwest, Alaska, Hawai'i and Pacific Islands



National Climate Assessment



Great Plains

Rising temperatures are leading to increased demand for water and energy. In parts of the region, this will constrain development, stress natural resources, and increase competition for water. New agricultural practices will be needed to cope with changing conditions.

Explore how climate change is affecting the Great Plains.



National Climate Assessment

Energy, Water and Land Use

Increased demands on water and energy. More competition over water among communities, agriculture, energy production, and ecological needs.

Sustaining Agriculture

Changes to crop growth cycles will new agriculture practices

Conservation and Adaptation

Landscape fragmentation will make species adaptation difficult.

Vulnerable Communities

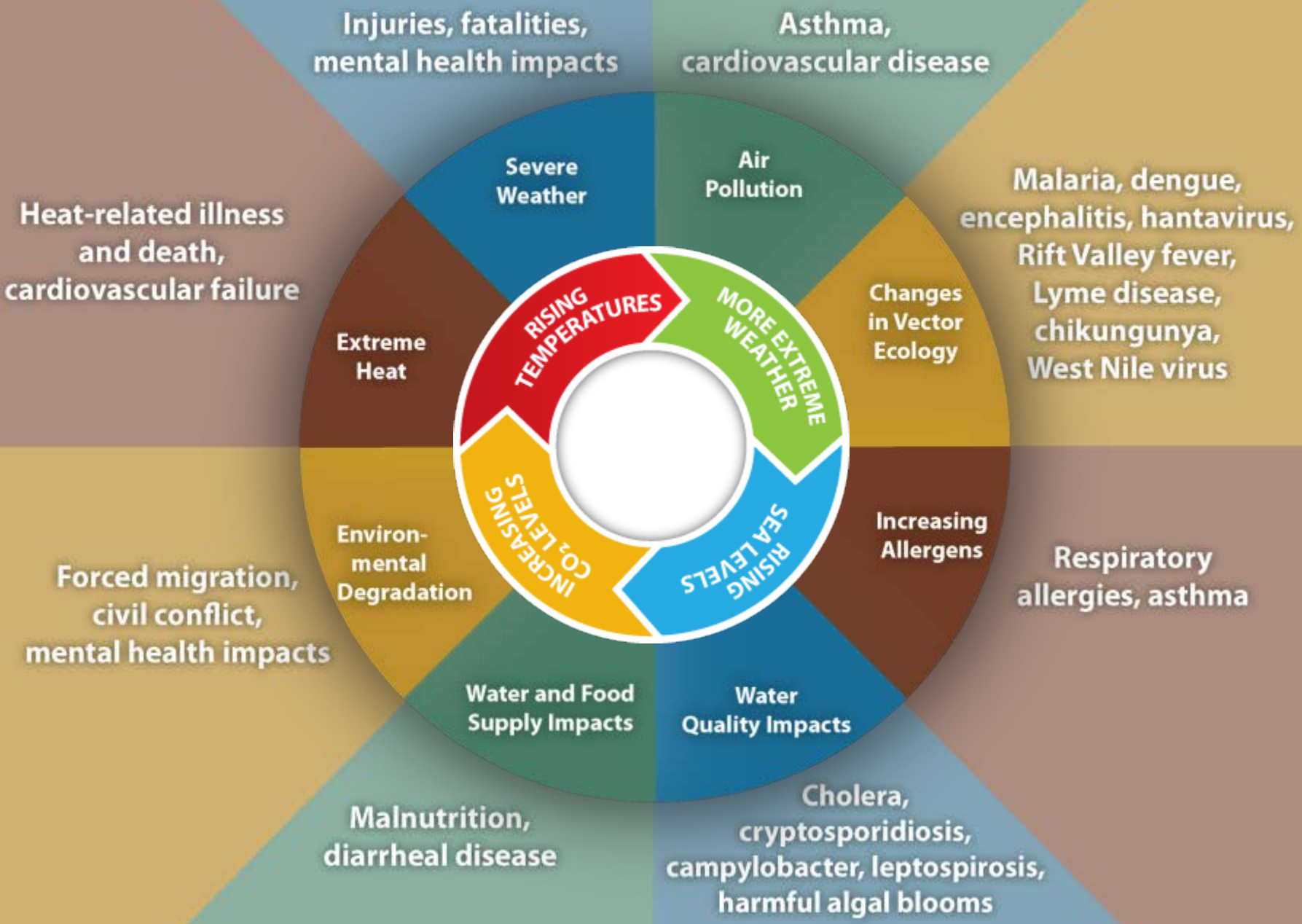
Vulnerable communities will be stressed by more frequent extreme weather events

Opportunities to Build Resilience

Existing adaptation and planning efforts fall short.



Center for Disease Control – Impacts of Climate Change on Health





Climate Change and Our Lungs

Air pollution, extreme weather events and other challenges stemming from climate change all endanger our lung health.

- Air Pollution
- Allergens
- Flooding & Extreme Weather
- Wildfires

“From the direct impact of the temperature and weather changes to the special burdens these changes place on the most vulnerable communities, climate change seriously threatens our wellness—especially our lung health.”





American Academy of Pediatrics



DEDICATED TO THE HEALTH OF ALL CHILDREN™

Climate Change and Children's Health

“Tackling climate change could be the greatest global health opportunity of the 21st century.”

The effects of climate change on child health include:

- physical and psychological sequelae of weather disasters
- increased heat stress
- decreased air quality
- altered disease patterns of some climate sensitive infections
- food, water, and nutrient insecurity

“...failure to take prompt, substantive action would be an act of injustice to all children.”



Declaration on Climate Change and Health 2016





AMERICAN PUBLIC HEALTH ASSOCIATION

For science. For action. For health.

Climate Change



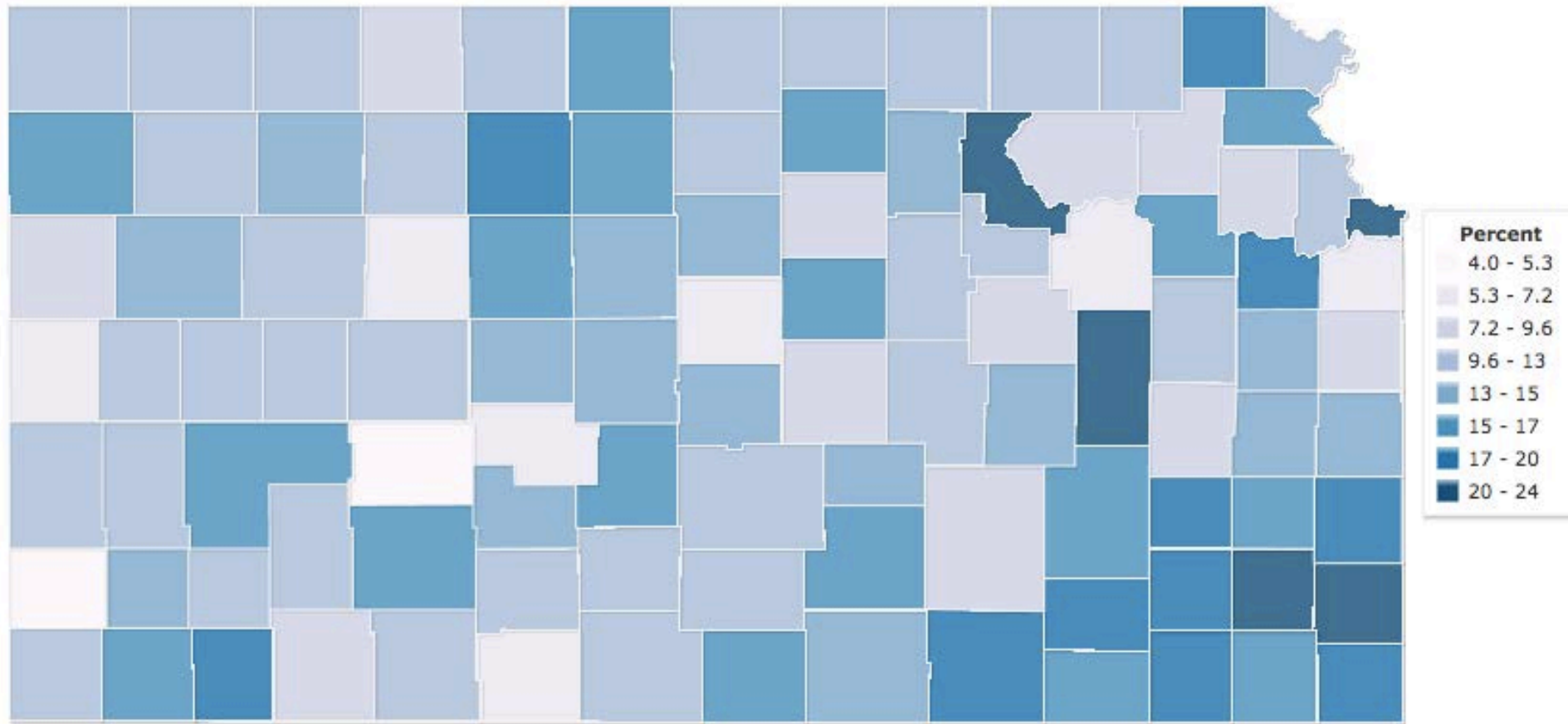
#ClimateChangesHealth

January	Introduction to the Year of Climate Change and Health
February	Climate Justice and Health
March	Clean Energy
April	Transportation and Healthy Community Design
May	Air Quality, Lung and Heart Health
June	Mental Wellness and Resilience
July	Agriculture and Food Safety and Security
August	Water Quality
September	Extreme Weather
October	Vulnerable Populations, Focus on Children
November	Tribal and Indigenous Health
December	Co-benefits



Who bears the greatest burden?

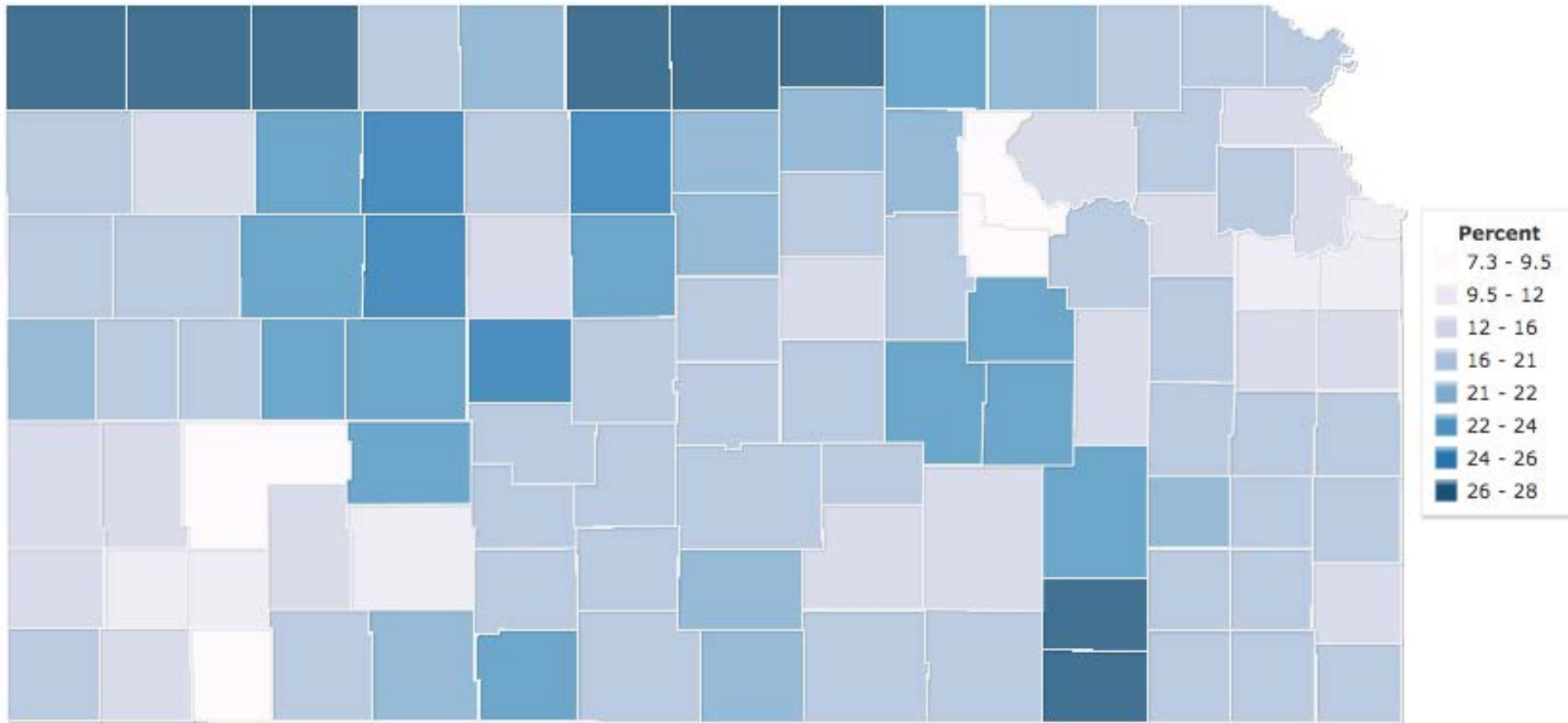




• Persons below poverty level, percent, 2009-2013

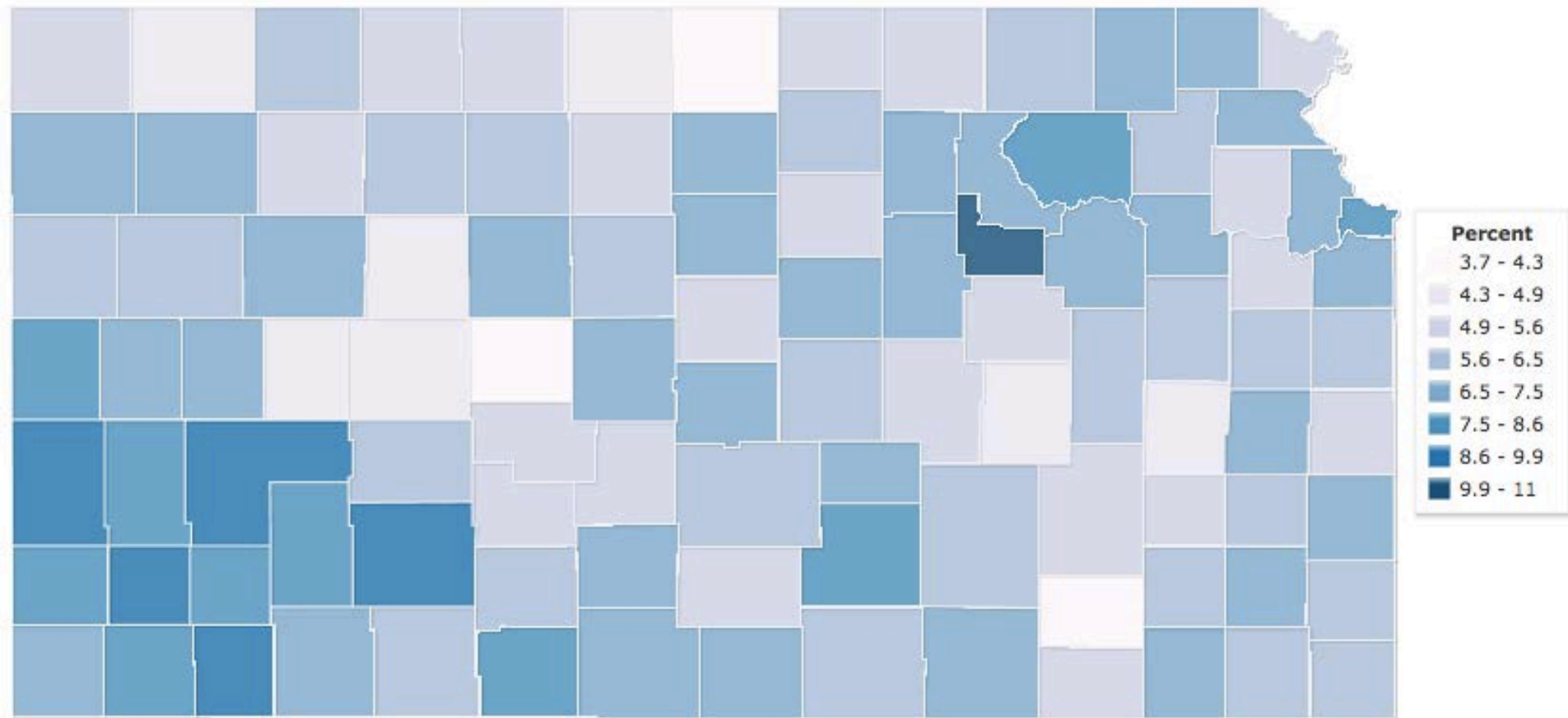


Elderly by County



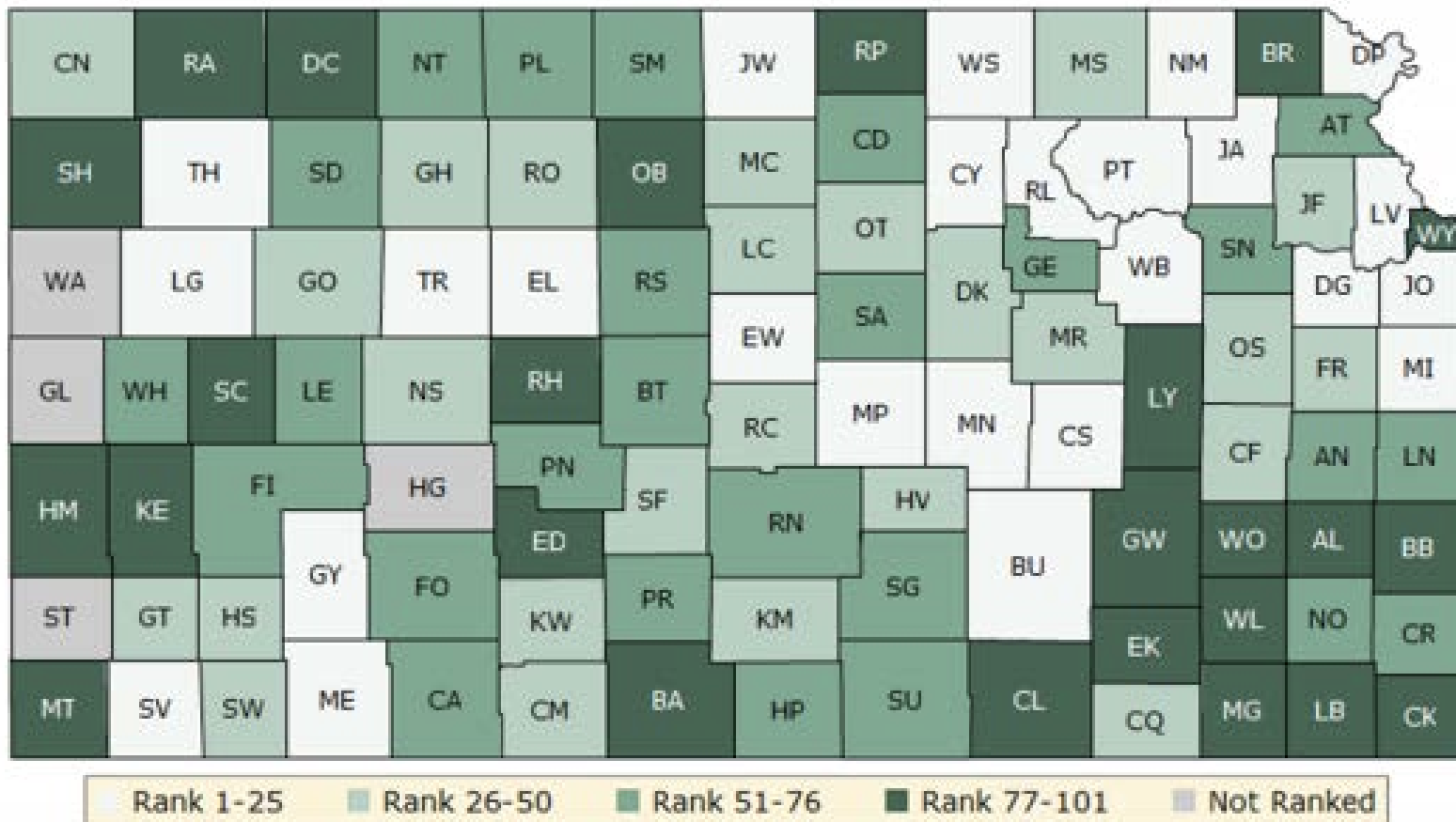
•Persons 65 years and older, 2003

Youth by County



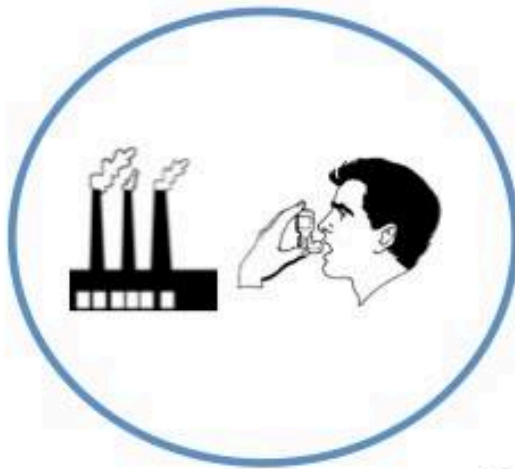
• Persons under 5 years, percent, 2003





Based on an equal weighting of length and quality of life. Lighter shades indicate better performance. countyhealthrankings.org

70% of US supports setting strict CO₂ emission limits on existing coal-fired plants to reduce global warming & improve public health.



vs.



@YaleClimateComm



Kansas WEALTH Project

Water, Energy, Air, Land, Transportation
& Health

*Increasing community resilience
and reducing climate risks
in the Heartland.*



KANSAS HEALTH
FOUNDATION



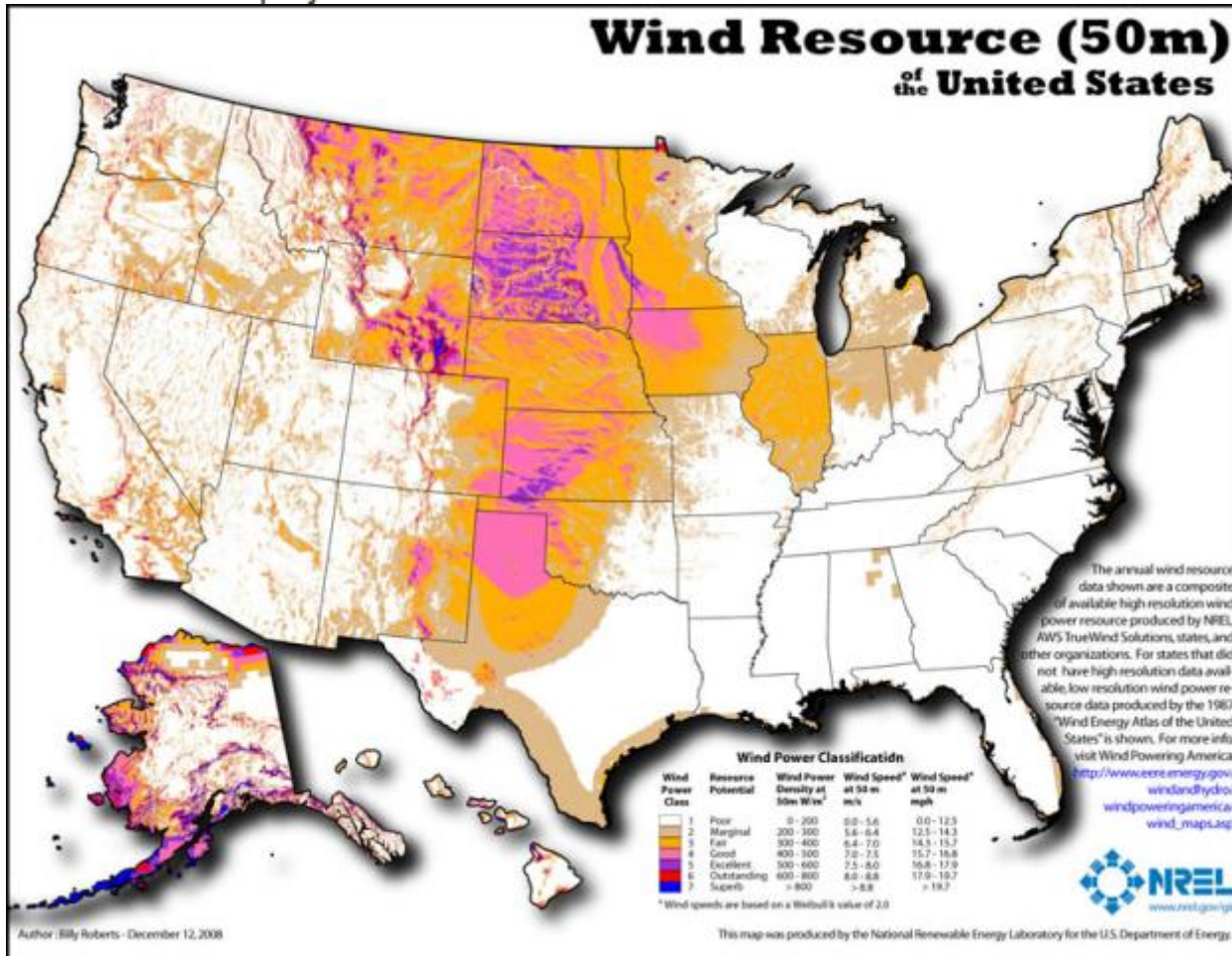


Top 10 Reasons for Hope In Kansas

(in no particular order)



Top TEN Reasons for HOPE



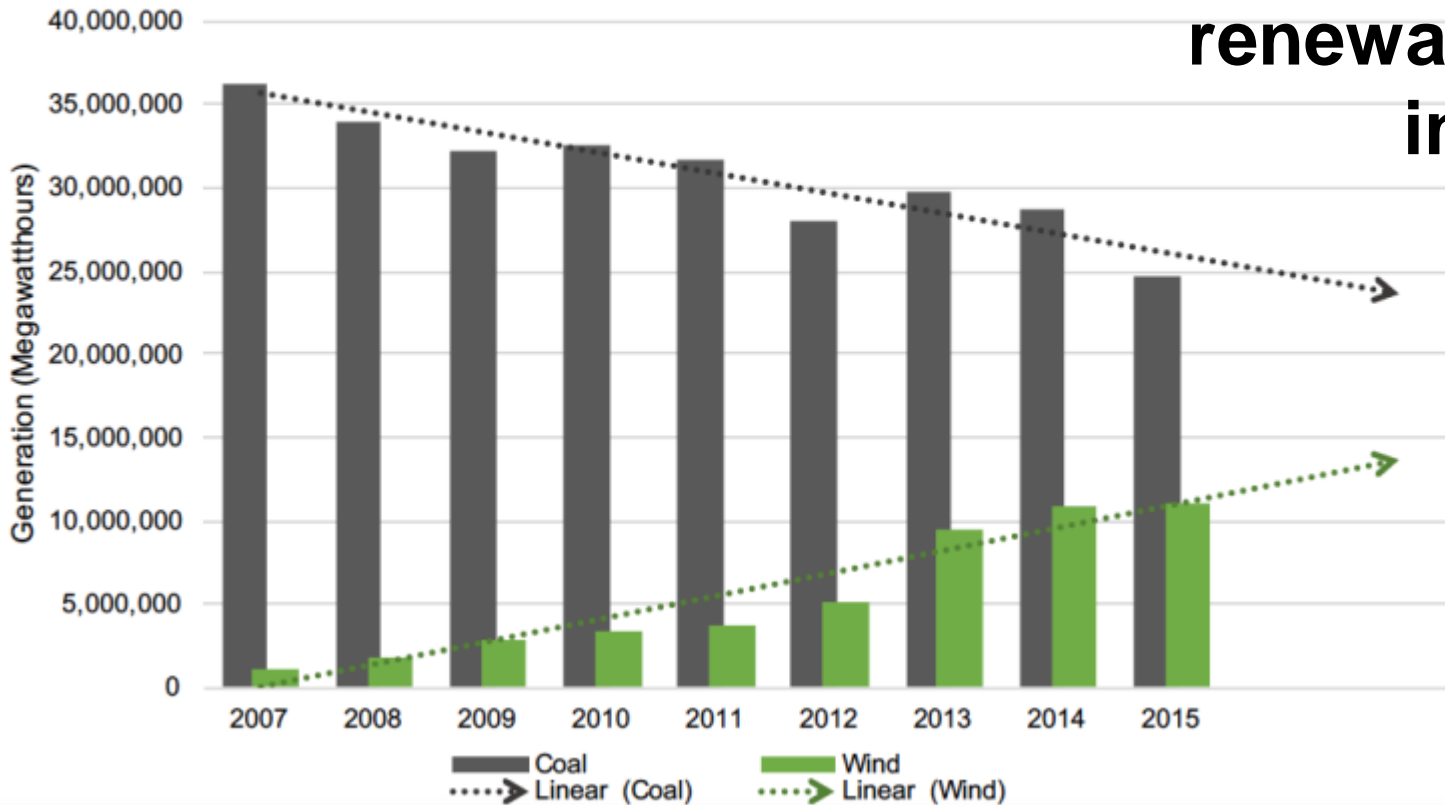
Kansas has the second best wind resource in the nation.



Top TEN Reasons for HOPE

**Kansas Utilities
went from
2.5% to 29%
renewable energy
in ten years**

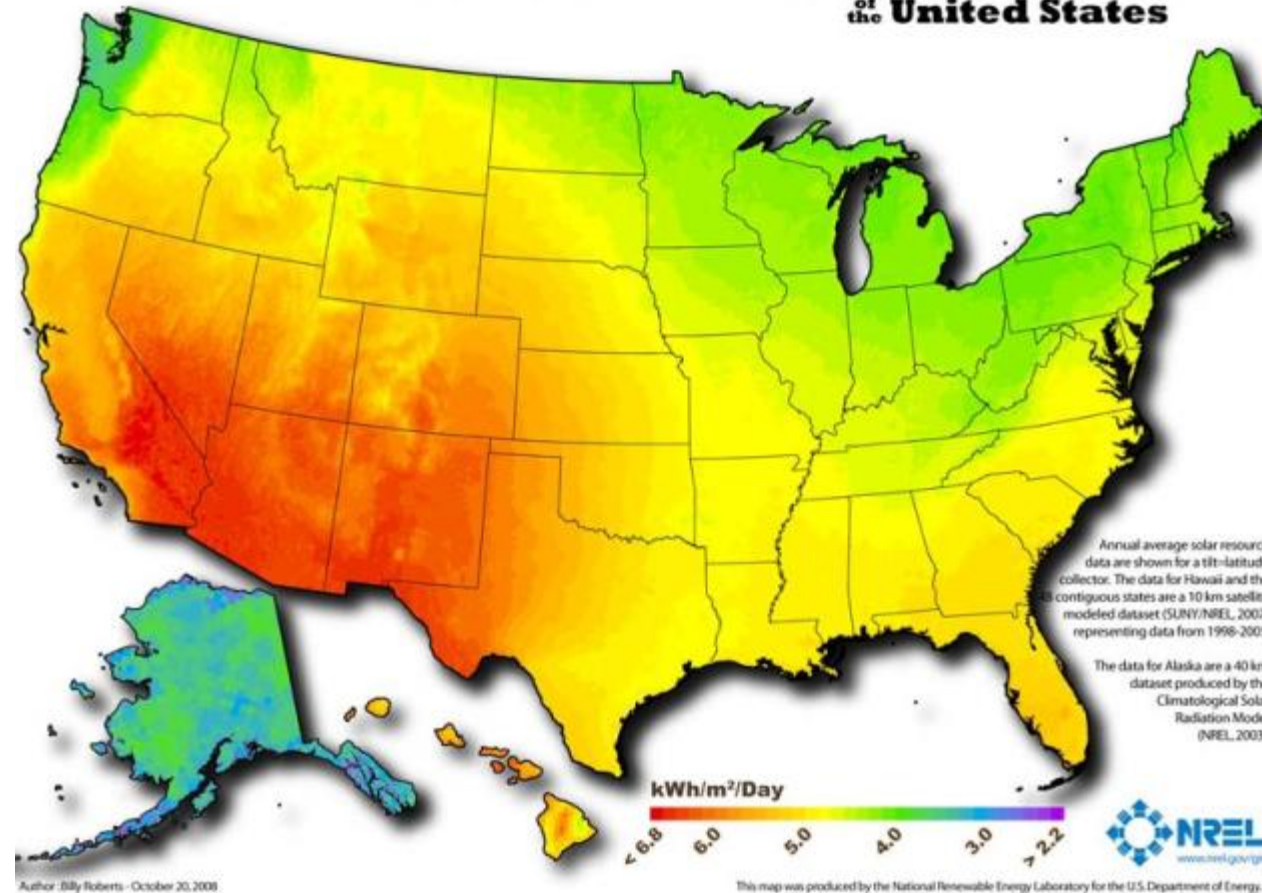
Kansas Electric Generation (MWH)
by Coal & Wind
2007-2015





Top TEN Reasons for HOPE

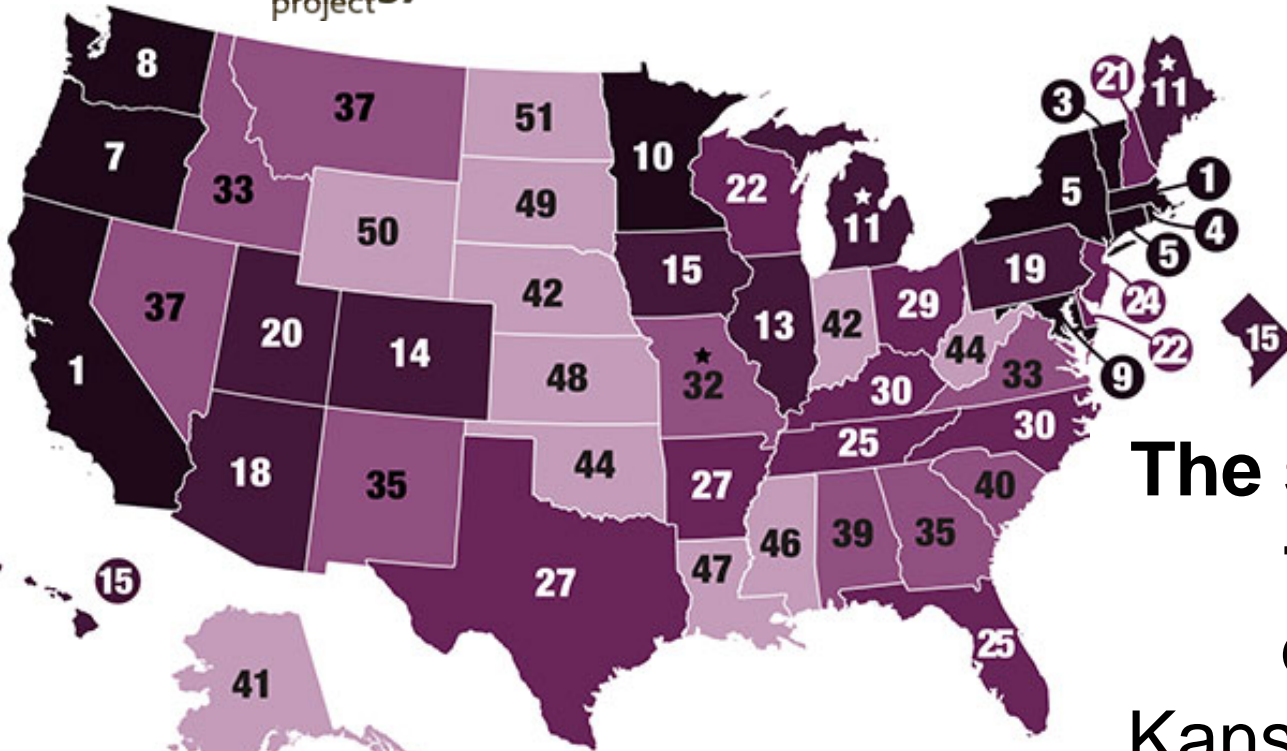
Photovoltaic Solar Resource of the United States



Kansas is in the top 5 for solar potential.



Top TEN Reasons for HOPE



The sky is the limit for energy efficiency!

Kansas ranks 48th in the nation for energy efficiency – there’s so much potential!



Top TEN Reasons for HOPE



11,874

people attended
energy education
events

strategic
energy plans
created

84

10.79 billion
total BTU's saved



gallons of
water saved
16,033,362



116

energy reviews completed

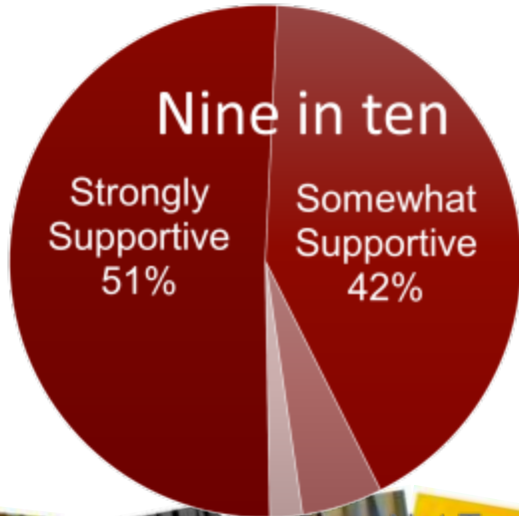
\$34,512,774

dollars saved

Kansas
voters value
energy
efficiency



Top TEN Reasons for HOPE



Kansas voters support renewable energy





Top TEN Reasons for HOPE



Clean
Energy
means
BUSINESS
in Kansas!



Top TEN Reasons for HOPE



Kansas farmers and ranchers are innovating to save water and energy and manage for the extremes.





Top TEN Reasons for HOPE



Kansas organizations are convening around climate resilience & health





Top TEN Reasons for HOPE



Kansas voters are advocating for clean energy policies!





**What would it take for us
to make progress
on these issues?**





Now it's your turn

My climate conversation starter

-90 seconds MAX

-Starts with your (brief) story

-2 or 3 relevant points

-Ends with a question



How can I make a difference?





How do we make a difference?





Join the conversation!

www.climateandenergy.org

Twitter: @cepHeartland

Facebook: facebook.com/CEPheartland

Dorothy Barnett barnett@climateandenergy.org

Rachel Myslivy myslivy@climateandenergy.org